

Data -> C:\Users\Public\Documents\ChemStation\1\Data\SE07NOV 2023-11-07 14-56-21\
Sample-> CPT22010446-20-B2-80deg-24h

Injection Date : Wed, 8. Nov. 2023

Seq Line : 38

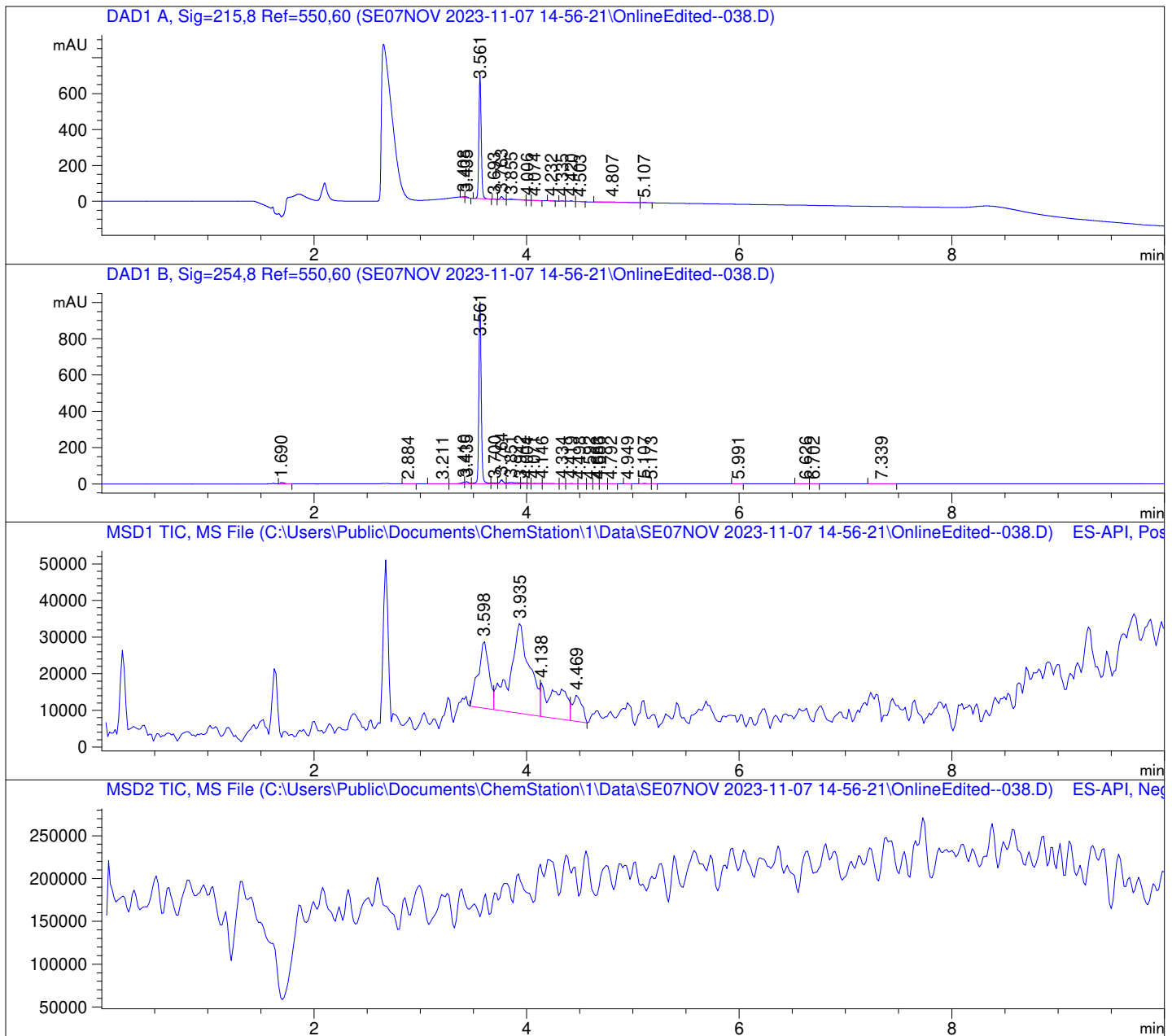
Location : 75

Inj. Vol. : 2 µl

Acq. Method : C:\Users\Public\Documents\ChemStation\1\Data\SE07NOV 2023-11-07
14-56-21\22010446 LCMS-6.M

Analysis Method : C:\Users\Public\Documents\ChemStation\1\Data\SE07NOV 2023-11-07
14-56-21\22010446 LCMS-6.M (Sequence Method)

Waters XBridge Phenyl (4.6 * 150 mm; 3.5 µm); 0.05% TFA (aq) / AcN: 100/0 (0.0 min) -
-> (6.0 min) --> 70/30 (0.0 min) --> (2.0 min) --> 10/90 (2.0 min); Flow: 1.0 ml/min;
MSD1 = positive; MSD2 = negative



DAD1 A, Sig=215,8 Ref=550,60

Peak #	Ret. Time [min]	Area [mV *s]	Area %
1	3.408	5.508	0.477
2	3.435	8.052	0.698
3	3.561	1048.205	90.817
4	3.693	0.769	0.067
5	3.763	28.968	2.510
6	3.855	21.625	1.874
7	4.006	0.951	0.082
8	4.074	1.196	0.104
9	4.232	1.021	0.088
10	4.335	3.729	0.323
11	4.420	7.426	0.643
12	4.503	1.943	0.168
13	4.807	19.434	1.684
14	5.107	5.372	0.465

DAD1 B, Sig=254,8 Ref=550,60

Peak #	Ret. Time [min]	Area [mV *s]	Area %
1	1.690	19.497	1.081
2	2.884	0.457	0.025
3	3.211	2.518	0.140
4	3.410	20.772	1.151
5	3.435	27.980	1.551
6	3.561	1547.591	85.773
7	3.700	17.940	0.994
8	3.764	51.157	2.835
9	3.851	48.767	2.703
10	3.942	14.999	0.831
11	4.004	5.619	0.311
12	4.071	14.194	0.787
13	4.146	13.398	0.743
14	4.334	3.233	0.179
15	4.419	5.474	0.303
16	4.498	0.950	0.053
17	4.592	0.503	0.028
18	4.663	0.478	0.027
19	4.686	0.336	0.019
20	4.792	0.158	0.009
21	4.949	0.166	0.009
22	5.107	5.605	0.311
23	5.173	0.138	0.008
24	5.991	0.217	0.012
25	6.626	0.745	0.041
26	6.702	0.139	0.008
27	7.339	1.255	0.070

